

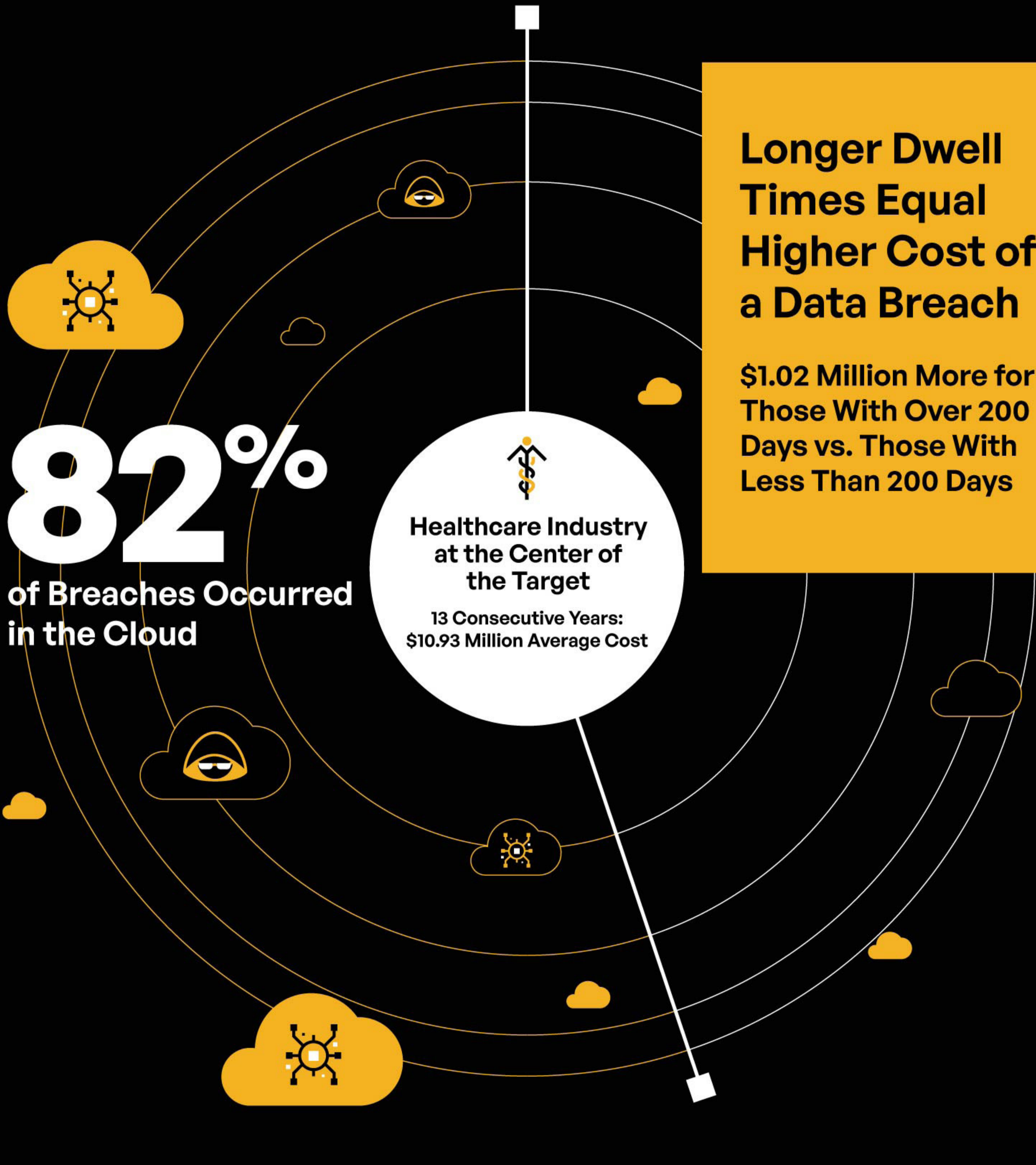
Sensitive Content Communications Privacy and Compliance Risk Through the Lens of IBM's 2023 Cost of a Data Breach Report

Top Insights

Annual Cost of a Data Breach Hit

\$4.45M

in 2023



Risk of the Software Supply Chain and Third Parties

12%

of All Data Breaches in 2023 Were Connected to the **Software Supply Chain**

15%

of All Data Breaches in 2023 Were Connected to **Business Partners**

Cost of Data Breach \$4.76 Million Is 11.8% Higher Than the Average Cost of a Data Breach

3 Cost Amplifiers of a Data Breach



Cybersecurity Skills

Organizations With a High Level of Cybersecurity Skills Shortage Have a **34.6%** Higher Average Data Breach Cost Vs. Those With a Low Level of Cybersecurity Skills Shortage



Security System Complexity

Higher Security System Complexity Increases Data Breach Cost by **31.6%** Over Those With Lower Security System Complexity



Regulatory Noncompliance

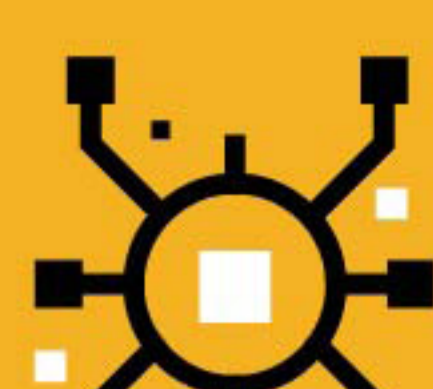
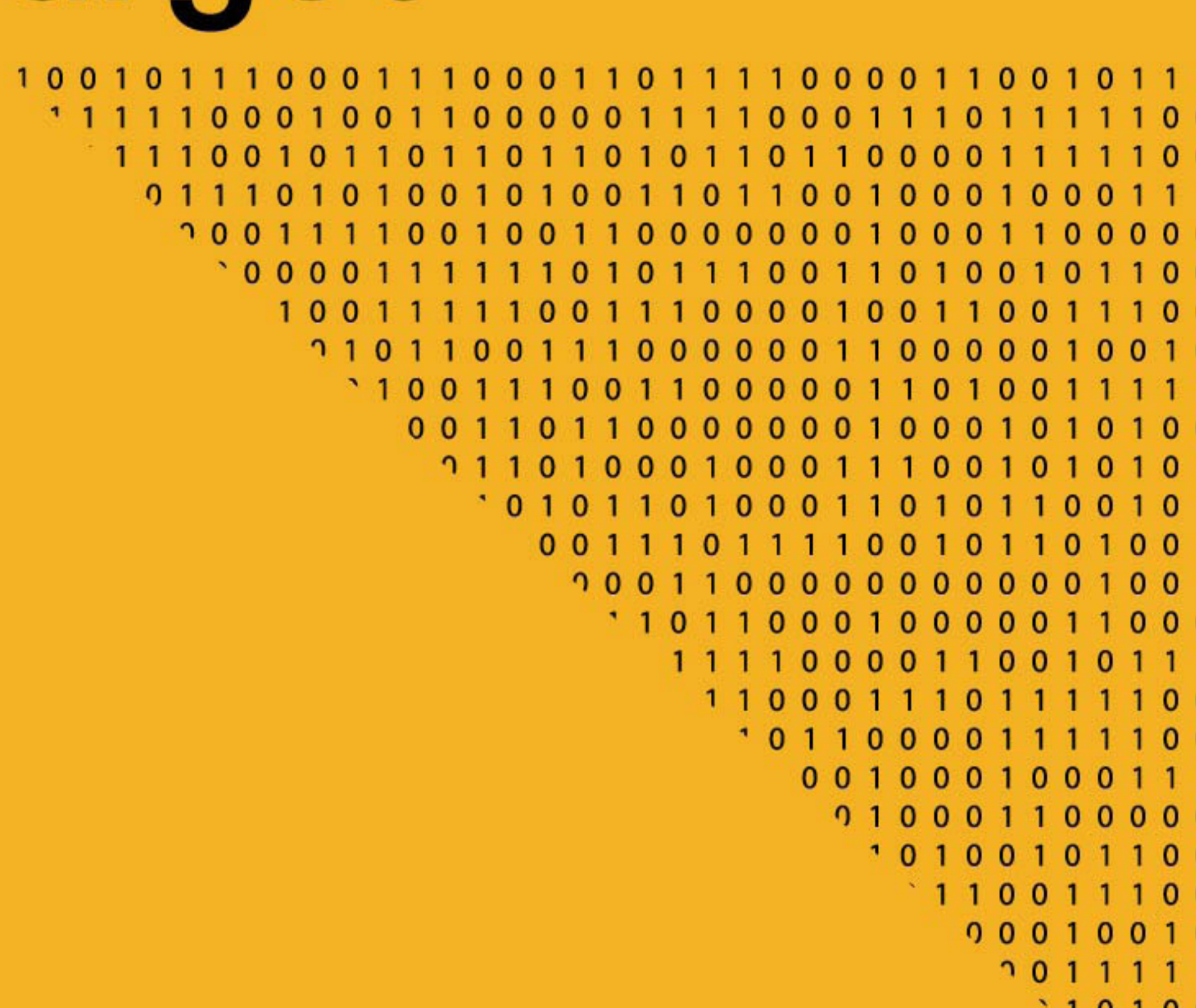
Organizations With a High Level of Regulatory Noncompliance Have a **23%** Higher Average Data Breach Cost Than Those With a Low Level of Regulatory Noncompliance

Personal Data Is the Prime Target

Customer and Employee PII Is the Costliest Data Type

\$183 and \$181

Per Record, Respectively



Data Breaches Involving **Customer PII** Increased From

47% in 2022 to 52% in 2023

For more Kiteworks insights on IBM's 2023 Cost of a Data Breach Report, check out our [blog post](#).

For more information on the Kiteworks Private Content Network, click [here](#).